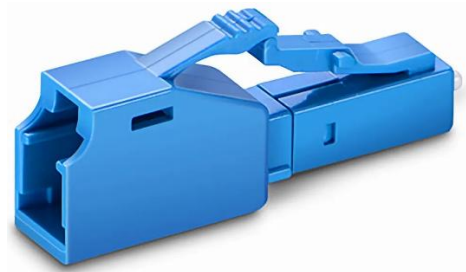


# LC/UPC Male-Female Attenuator



## Technical Specification

Physical Characteristics	Description
Connector Type	LC/UPC
Ferrule Type	Zirconia Ceramic
Transfer Mode	Singlemode
Max Optical Input Power	200mW
Humidity	95%RH

## Experimental Introduction

	Unit	Condition	Values
Scope of loss	dB	UPC & APC	0-30
Attenuation Accuracy	dB	1-9	±0.5
		10-25	±10%
Return Loss	dB	UPC	≥50
		APC	≥60
Operating Wavelength	nm	SM	1260~1620
Operating Temp Range	°C		-25~70